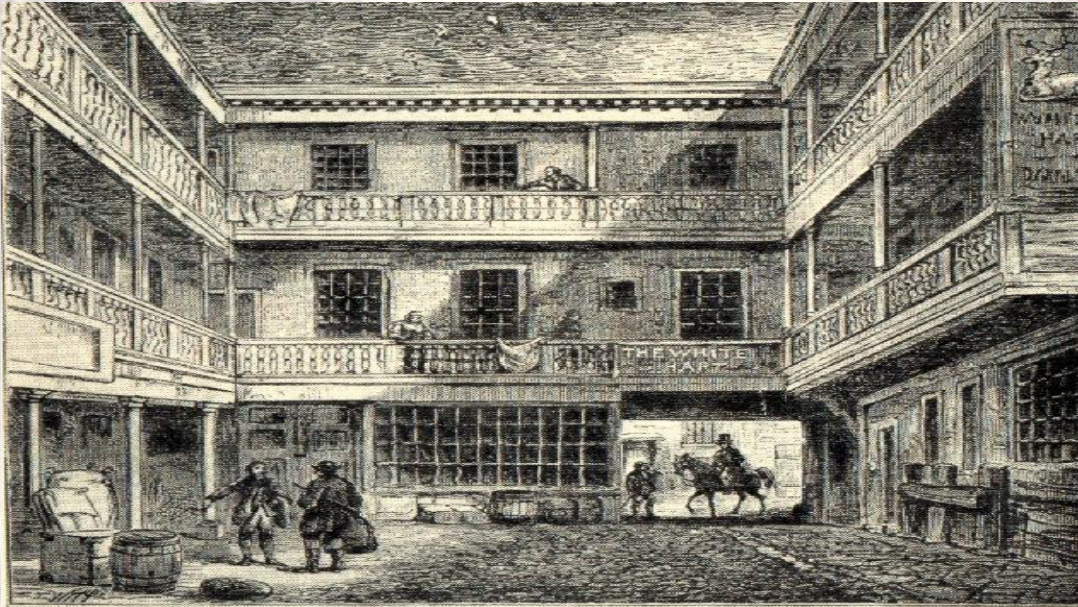


A stylized, painterly illustration of a medieval theatre building. The structure is a large, rectangular hall with a steep, gabled roof. The walls are constructed from light-colored stone or plaster, with a prominent timber-framed section on the left side. This section features a large, arched opening and several smaller windows. A large crowd of people, depicted in various medieval-style clothing, is gathered in front of the building, suggesting a performance or a public event. The overall style is reminiscent of a historical painting or a digital illustration. The text "Theatre History" is overlaid in the center in a black, gothic-style font.

# Theatre History





## *The White Hart Inn*

*(Typical Inn  
Yard)*

- Talented groups of actors began to gain popularity and they were often able to take their performances to **inn yards**.
- when the Globe was being constructed, there were a number of other theatres in existence, including the **Rose, the Swan, and the Curtain**.



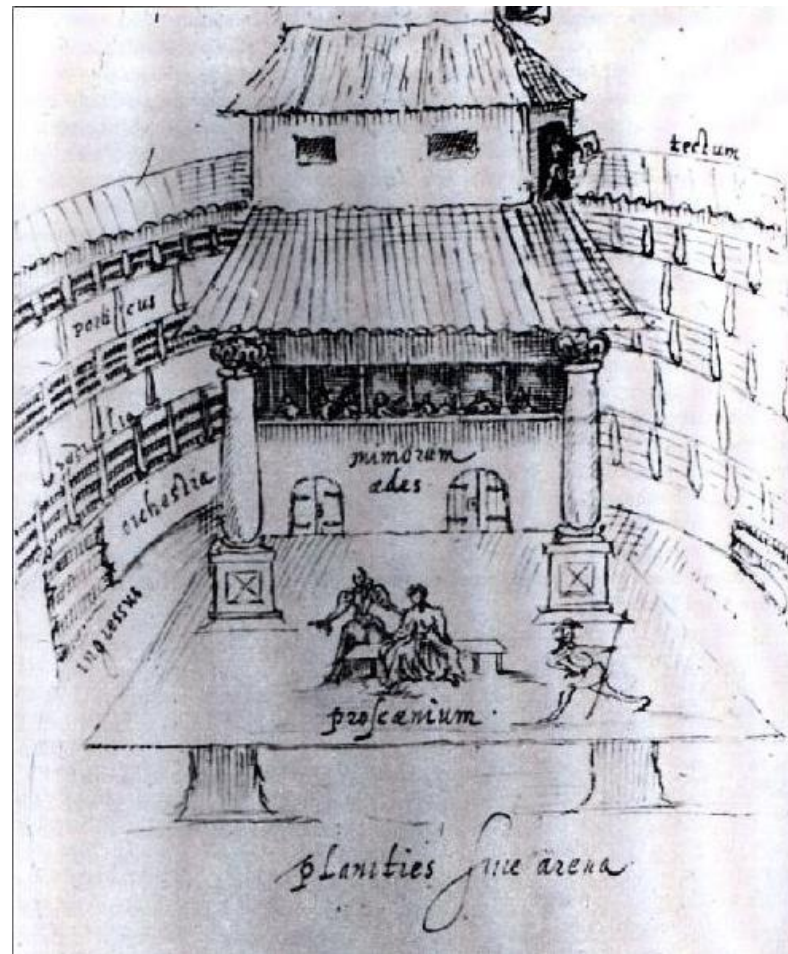


Many Inns where used as playhouses until the theatres began to be built in London from 1576 - 1629

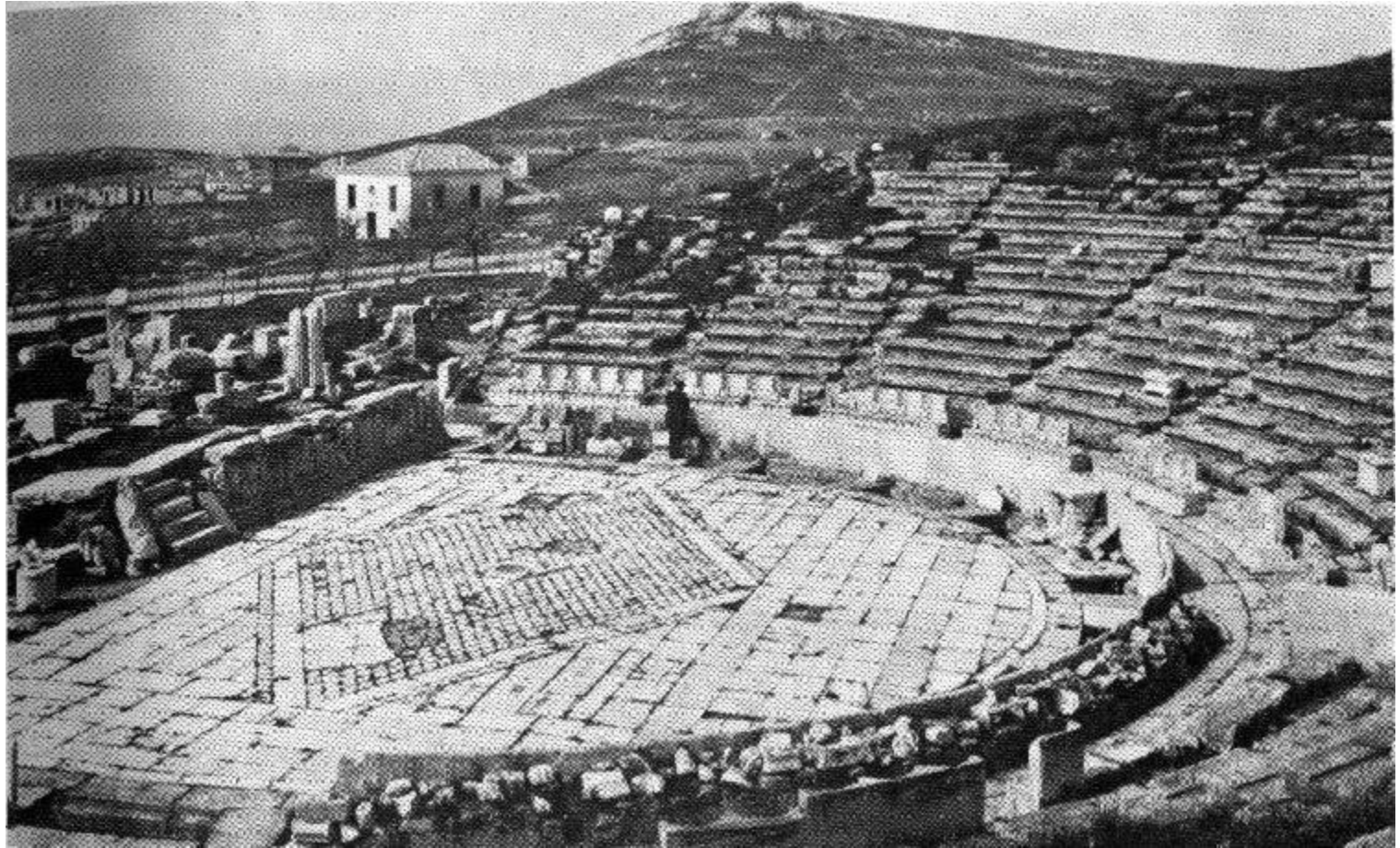
# Elizabethan Theatres

- Originally, drama in England took place anywhere- in inns, barns, etc. However, as drama and plays became more popular in English, more room was needed and consequently, theatres were built

# Interior of the Swan, c1596

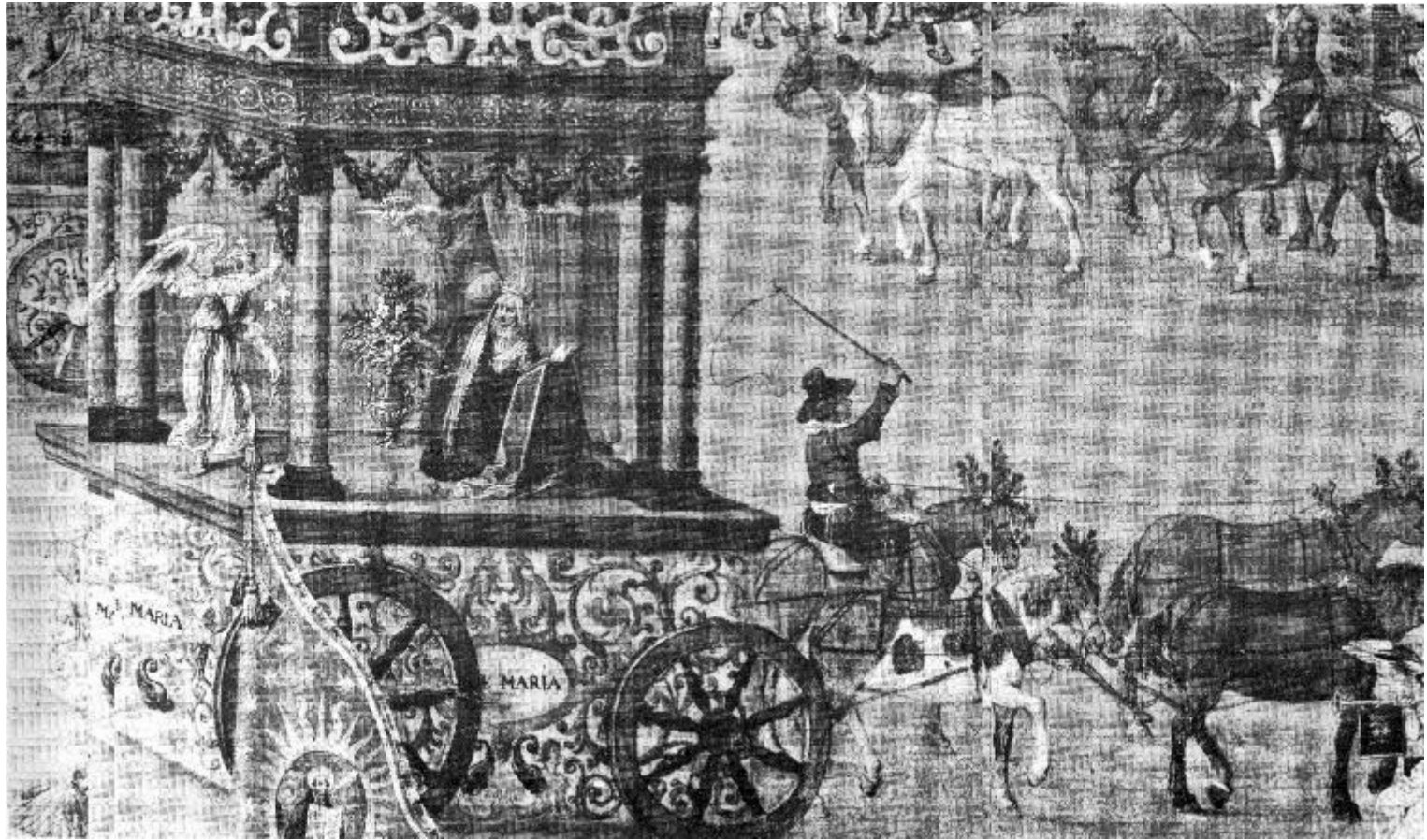


# *Ancient Greek Amphitheater*





# *Traveling Pageant Wagon*



# Medieval Theatre

- Traveling theatre used by the church as a teaching tool
- Most people were illiterate so they learned by watching:
  - miracle plays
  - mystery plays
  - morality plays



- The Theatre as a Business



# From The Theatre to the Globe

- In 1598, the lease for The Theatre was running out and Giles Allen refused to renegotiate
- Over the Christmas holiday, Burbage, Shakespeare and a group of friends dismantled The Theatre board-by-board and took the lumber south across the river Thames where they rebuilt it as The Globe in 1599

## The Theatre



*Built in 1576 by James Burbage on land leased from Giles Allen*



1599 the opening of

# *The Globe Theatre*



# Virtual Tour

<http://aspirations.english.cam.ac.uk/converse/movies/index2.html>

The song you are listening to is Prospero's Speech from *The Tempest* performed by Loreena McKennitt - *The Mask and Mirror* album, 1994. Loreena McKennitt has a long musical association with Shakespeare





# Common misconceptions about the Globe:

- Shakespeare was not the owner of the Globe, he was a part owner with his acting troupe,
- *The Lord Chamberlain's Men*

*James and Richard Burbage*

*John Heminge*

*Augustine Phillips*

*Thomas Pope*

*Will Kempe*



# *Globe Trivia*

- Up to 3000 people would flock to the theatre and its grounds
- There were no actresses. Female characters had to be played by young boys with high pitched voices and no facial hair. The acting profession was not a credible one and it was unthinkable that any woman would appear in a play.

A crest displaying Hercules  
bearing the globe  
on his shoulders  
together with the motto :

"Totus mundus agit histrionem"

( the whole world is a playhouse)was displayed a top the  
theatre

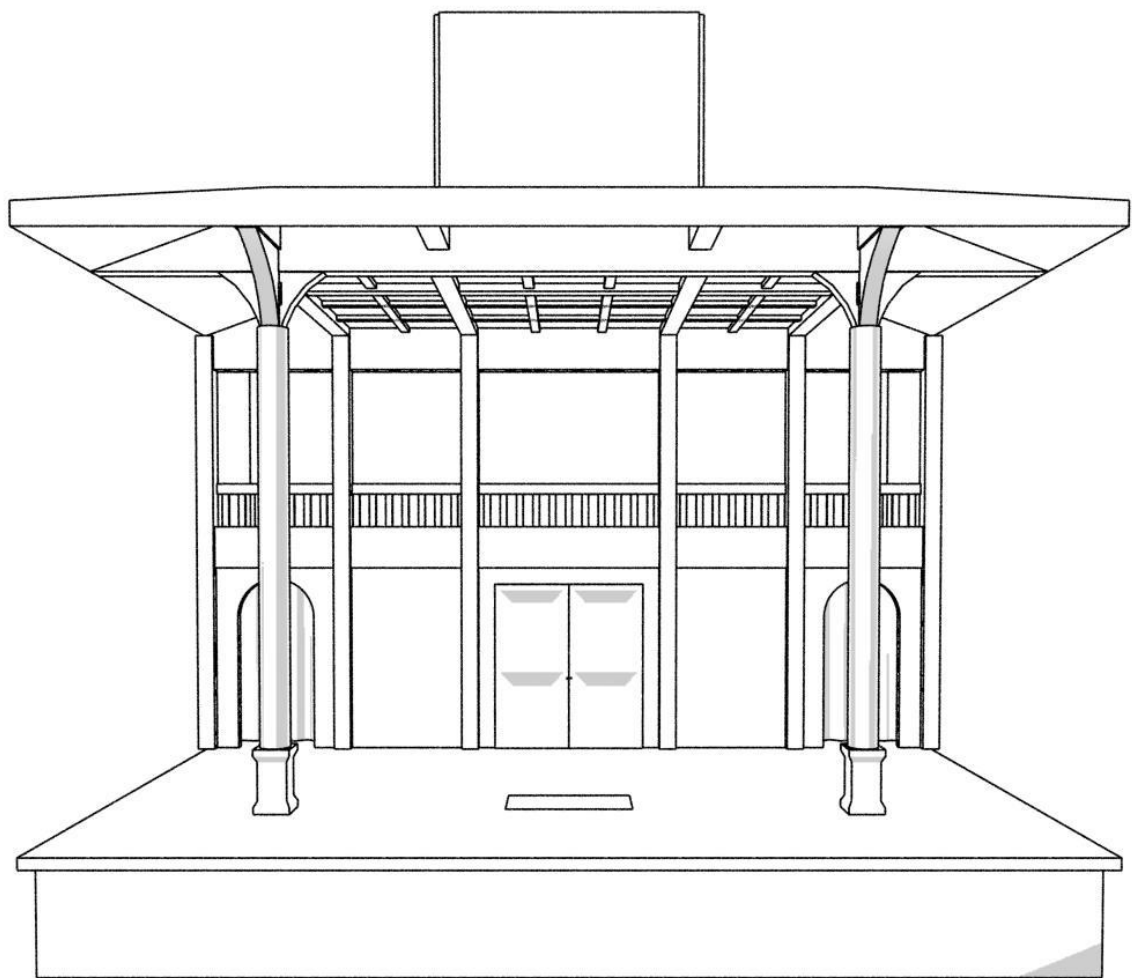
- This phrase was slightly re-worded in the William Shakespeare play As You Like It - "All the world's a stage" which was performed at the Globe Theater.



# Globe Theatre's Stage

- The stage was build on 3 levels:
  - a) A platform with a trap-door for the main action
  - b) A second level for windows and balconies as part of the scenery
  - c) A third level for representing heaven
- They did not have elaborate scenery or special lighting effects, but they did have very elaborate costumes
- Plays took place at 2:00 p.m. because they had no artificial lighting





# Elizabethan Audiences

- Shakespeare's plays drew in all types of people from the rich aristocracy of London to the working-class men to the unemployed to Queen Elizabeth
- The Elizabethan general public (the Commoners) referred to as "groundlings" would pay 1 penny to stand in the 'Pit' of the Globe Theater. They were known to be a rowdy group that would feel no shame in throwing vegetables and garbage at the stage and actors if they play did not hold their interest. The pit could hold up to 600 people jammed in.
- Citizens with more money (students, merchants and nobility) would pay to sit on benches and balconies.
- Rich nobles could watch the play from a chair set on the side of the Globe stage itself

CLAUDON

CLAUDON

# Elizabethan Audiences

- Elizabethan audiences were temperamental and demanding of the play.
- They wanted a rapid pace of action, and they were superstitious, and as such, often demanded this type of action on the stage
- They also enjoyed Shakespearean comedies as they provided an escape from their own lives. (Similar to the reasons we watch soap operas, sitcoms, movies, and reality TV.





Shakespeare performed  
many of his plays at  
The Globe Theatre  
including:

Julius Caesar (1599)

Hamlet (1600-1601),

Twelfth Night (1601),

Richard II (February 7th 1601)

Troilus and Cressida (1601-1602),

All's Well That Ends Well (circa 1602), Timon of Athens (c1604),

King Lear (1605),

Macbeth (1606), Pericles, Prince of Tyre (1607)

and Henry VIII in 1613.

**In 1613, the Globe Theatre caught fire during the production of Henry VIII and burned to the ground**



**Rebuilt in 1614, it was closed by the Puritans in 1642, and demolished in 1644. Shakespeare's Globe Theatre reopened in 1997.**

# Globe Theatre fire...

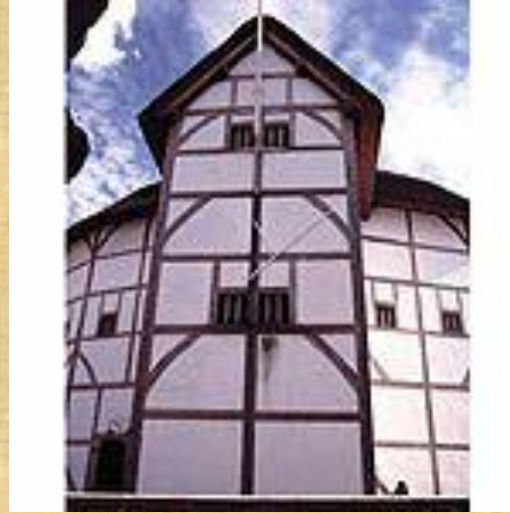
- The canon used for special effects, such as heralding great entrances, was loaded with gunpowder and wadding.
- The thatched roof caught on fire and the Globe Theatre burned to the ground.
- The Puritans ended the Globe Theatre. In 1642 the Puritan Parliament issued an ordinance suppressing all stage plays.
- The Puritans demolish the Globe Theatre in 1644



# Puritanism

- Discontented with the Church of England and worked toward religious, moral, societal reform
- Rejected the worldliness of society, esp. drama, frills in decoration (dress & building), and certain types of entertainment & literature
- Believed in hard work & strict adherence to the Bible

# The New Globe Theatre



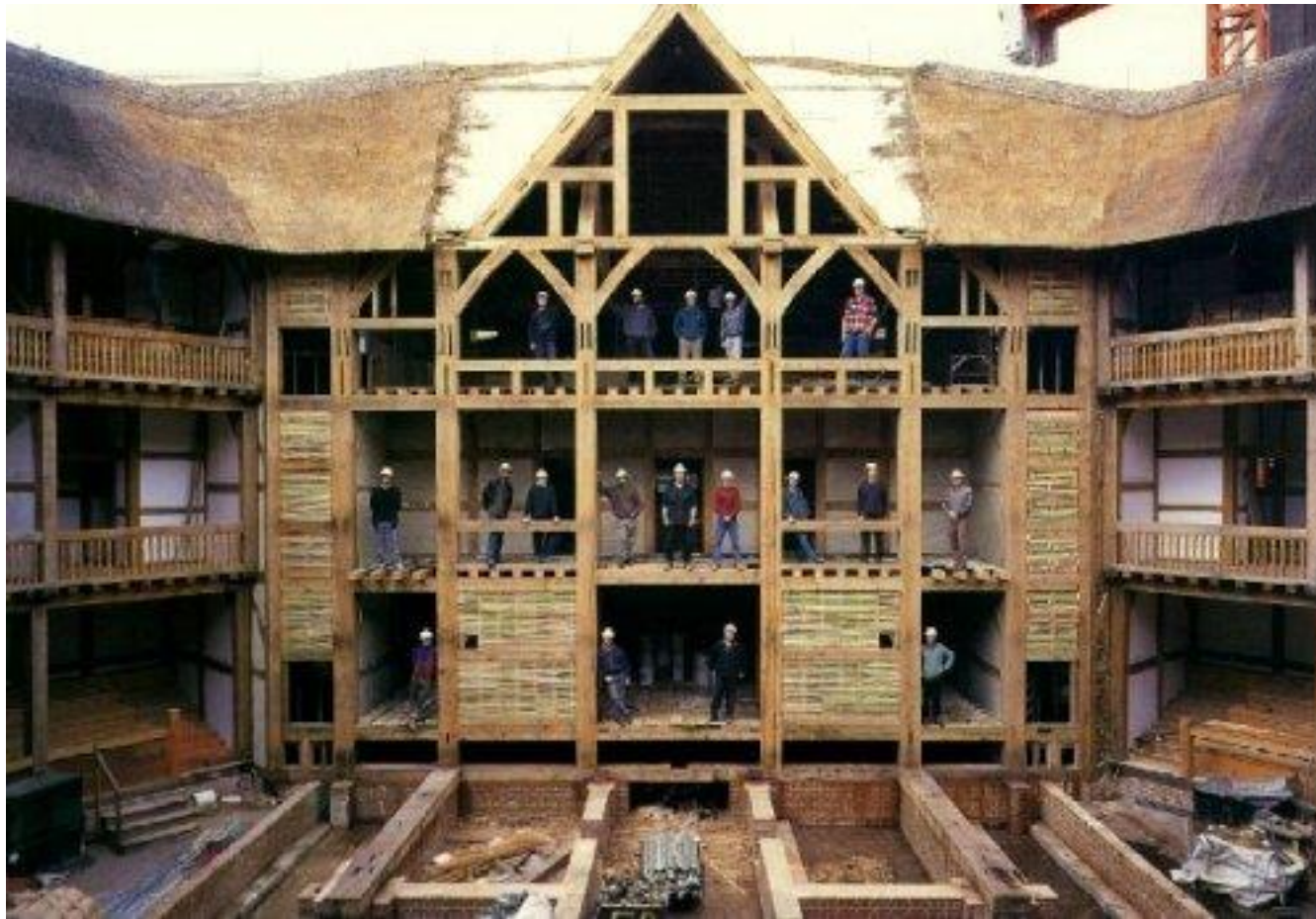


# SAM WANAMAKER

- The New Globe Theatre was the life's work of Sam Wanamaker. He designed a replica a reconstruction, in London, of the old Shakespearean Theatre
- Actor/director
- founded the Shakespeare Globe Trust to rebuild the Globe Theatre in London, England
- realized his dream of completing this amazing project
- Although he died in 1993, he lived to see the first two sections of the Globe unveiled in 1992
- The project was complete June 1997



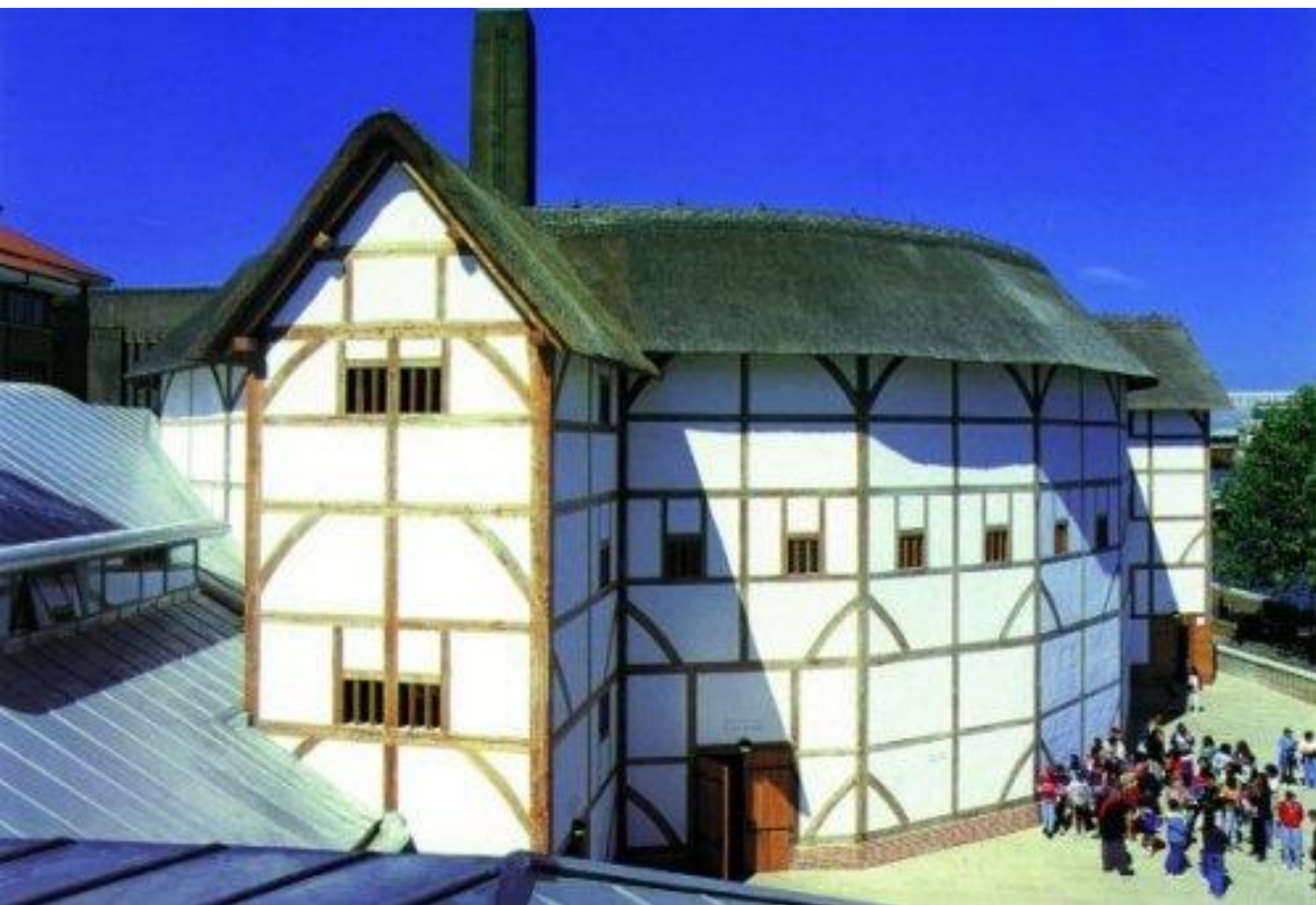
# The Globe undergoing construction



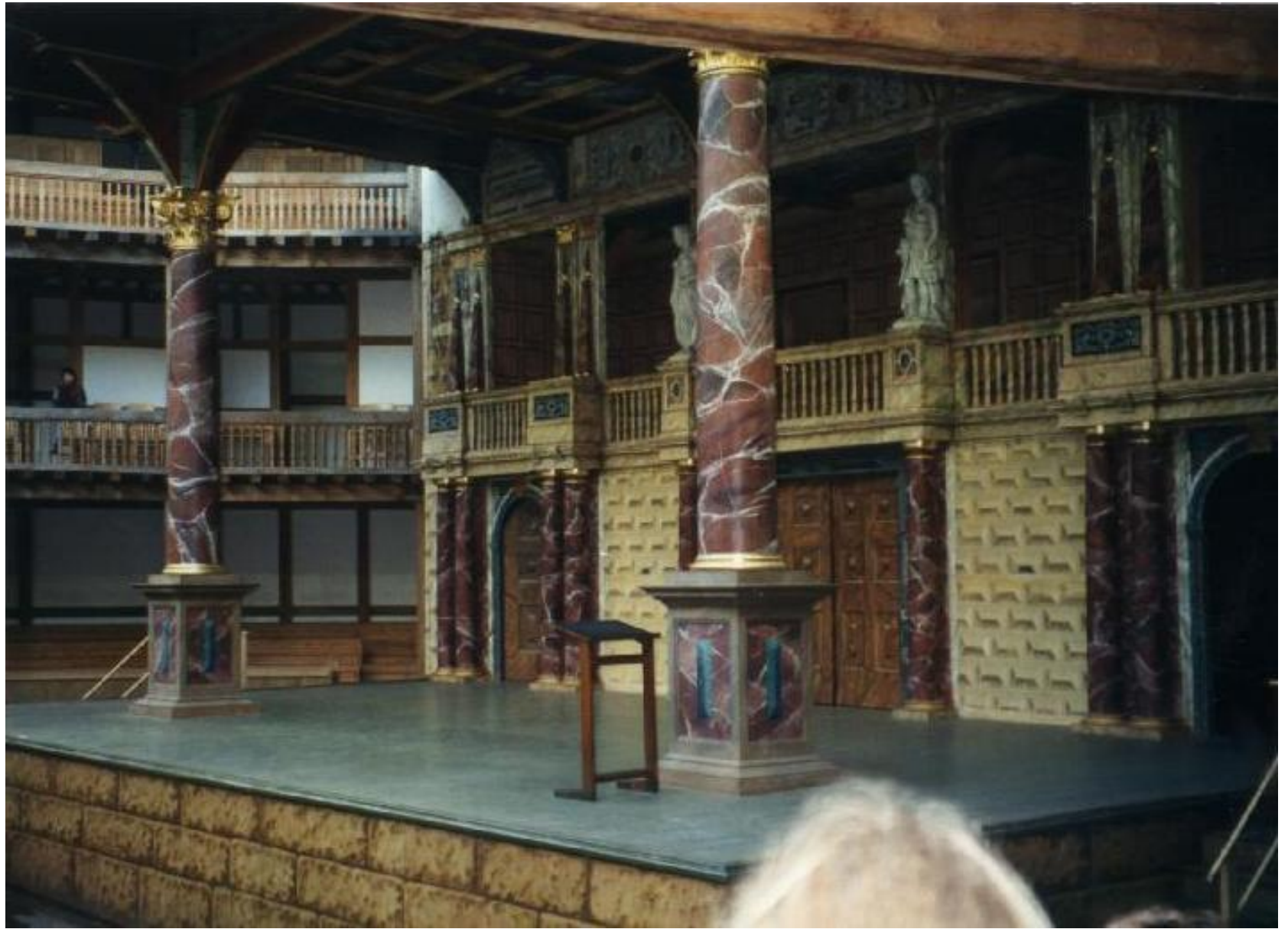












# The Heavens





# View from the Stage





# Performance



# Bibliography

- <http://www.enotes.com/william-shakespeare/shakespeares-globe-theater/>
- <http://absoluteshakespeare.com/trivia/globe/globe.htm>
- <http://www.william-shakespeare.info/william-shakespeare-globe-theatre.htm>
- **Art and Photos**
  - **Opening slide rendering:**
    - [www.davidclaudon.com/Elizabethan/globe3.jpg](http://www.davidclaudon.com/Elizabethan/globe3.jpg)
  - **Bear baiting:**
    - [http://www.homesteadbullhunde.com/pages/images/bear\\_baiting.jpg](http://www.homesteadbullhunde.com/pages/images/bear_baiting.jpg)
  - **Virtual tour:**  
<http://virtual.clemson.edu/caah/shakespr/VRGLOBE/VRGlobe.php>
  - **Slide shows:**
    - <http://www.wpi.edu/Academics/Depts/HUA/TT/Globe/slide8.html>
  - **New Globe:**
    - <http://www.wpi.edu/Academics/Depts/HUA/TT/Globe/>
    - <http://www.greatbuildings.com>